

BARN LIGHT FLOOR LAMP (FBL)

INSTALLATION INSTRUCTIONS

Rev. 1 (10/16)

WARNING

Make sure the light dimming controller is in the OFF position before plugging in the light to the wall outlet. Use the toggle switch on the lighting fixture or a properly installed wall switch to toggle the picture light ON and OFF. Plugging and unplugging the power adapter to toggle the lamp ON and OFF can drastically reduce the life of the power adapter and may cause it to malfunction.

Congratulations on purchasing your new quality lighting fixture from Cocoweb. If you have any questions about these instructions or are missing any parts, please call us at 888-783-0378 or email customerservice@cocoweb.com.

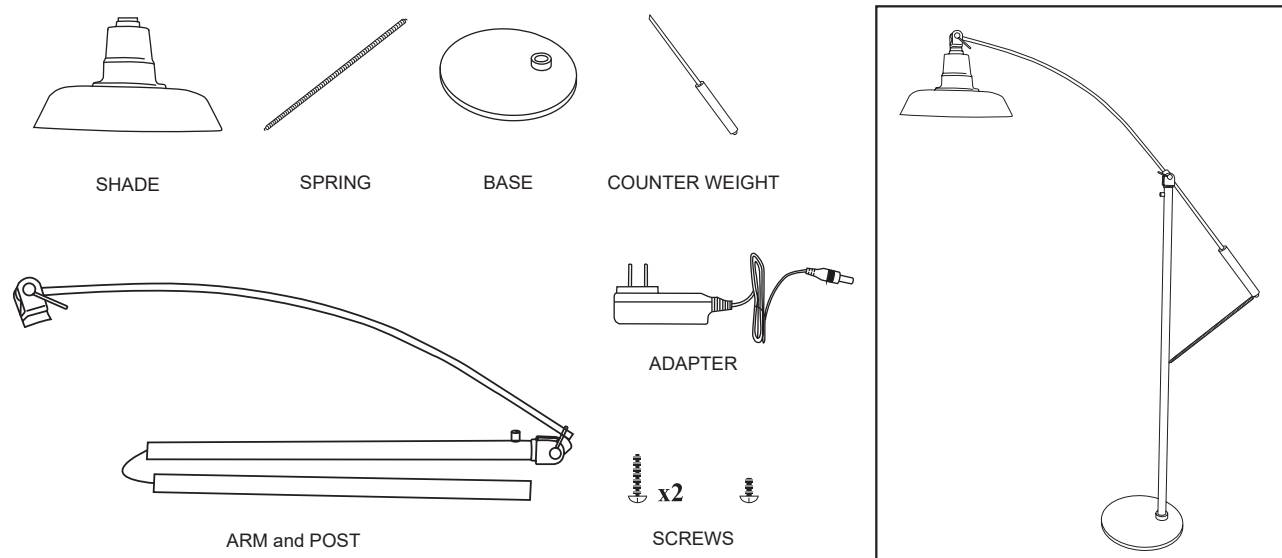
COCOWEB LIMITED WARRANTY:

Cocoweb.com warrants its products to be made of first class materials, free from defects of material or workmanship under normal use and to perform the service for which they are intended in a reliable and efficient manner when properly installed, for a period of (2) years from the date of purchase. During the warranty period, Cocoweb.com will, at its choice, repair or replace any part or parts which prove to be defective if returned to Cocoweb.com. NOTE: Modification of lamp in any way will void the warranty.

CARE INSTRUCTIONS:

Wipe clean with a dry microfiber cloth. DO NOT use abrasive or chemical cleaners as they may damage the finish. Do not submerge or expose to water.

INSTALLATION ITEMS:



CAUTION

Please read this entire manual before installation and use of fixture.
IMPORTANT - Save these instructions for later use.

BARN LIGHT FLOOR LAMP (FBL)

INSTALLATION INSTRUCTIONS

WARNING

Make sure the light dimming controller is in the OFF position before plugging in the light to the wall outlet. Use the toggle switch on the lighting fixture or a properly installed wall switch to toggle the picture light ON and OFF. Plugging and unplugging the power adapter to toggle the lamp ON and OFF can drastically reduce the life of the power adapter and may cause it to malfunction.

STEP 1: UNPACKING THE LIGHT:

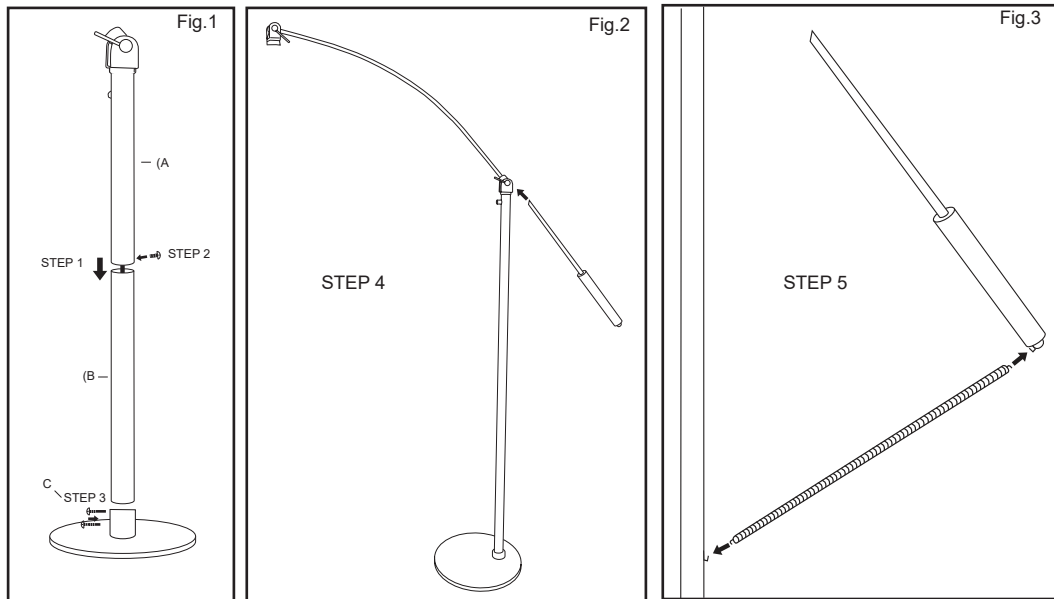
1. Remove foam and plastic wrapping from the light fixture.

STEP 2: LAMP ASSEMBLY:

1. Place part (A) inside of part (B) as shown in Fig.1

NOTE: Only can be fitted one way due to the placement grooves inside of the bars

2. Attach part A and part B together using the small placement screw
3. Insert part B into part C, and connect using the longer screws included
4. Screw Counter Weight clockwise into part A as shown in Fig. 2
5. Attach the spring to the hooks located on the Post and the Counter Weight as shown in Fig. 3



BARN LIGHT FLOOR LAMP (FBL)

INSTALLATION INSTRUCTIONS

WARNING

Make sure the light dimming controller is in the OFF position before plugging in the light to the wall outlet. Use the toggle switch on the lighting fixture or a properly installed wall switch to toggle the picture light ON and OFF. Plugging and unplugging the power adapter to toggle the lamp ON and OFF can drastically reduce the life of the power adapter and may cause it to malfunction.

STEP 3: SHADE INSTALLATION:

1. Pull the cord of the shade through the front of the attachment bracket at the top of the lamp, (Fig.4)
2. Once the cord is pulled through turn the shade clockwise to tighten, (Fig.5)
3. Measure 2" of the cord and cut any excess that remains, (Fig.6)
4. Strip the wire, from the remaining 2" of the chord, (Fig.7)
5. Use wire nuts to connect the wires from the shade to the lamp, (Fig.8)
6. Once the wire nuts are secured, tuck the remaining wire inside of the attachment bracket. (Fig.9)

