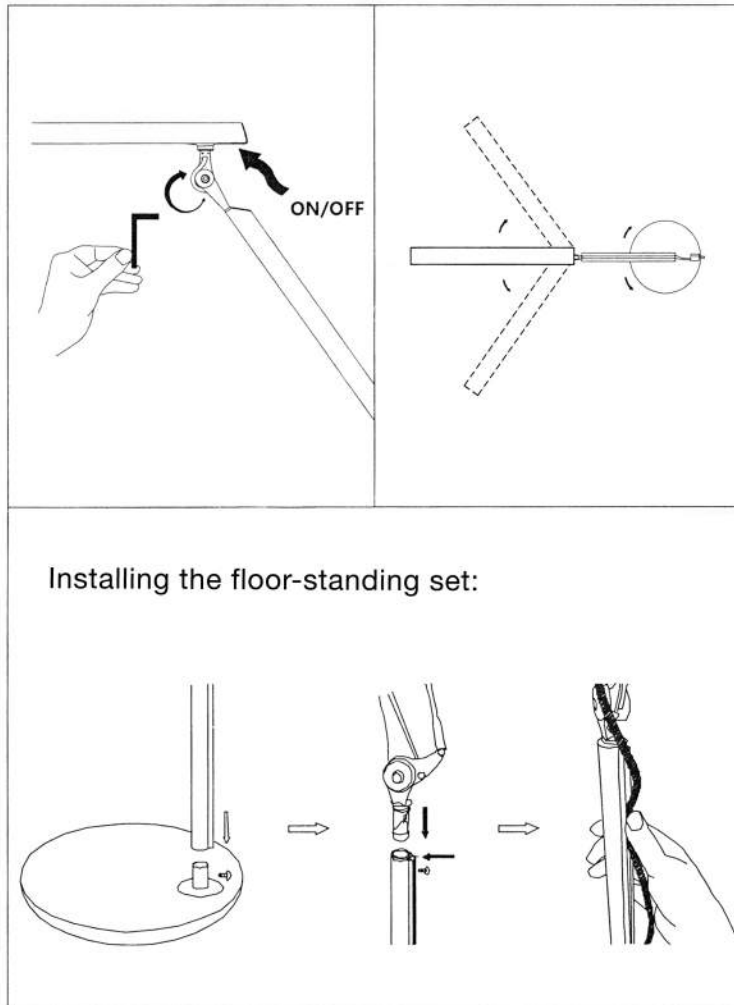


cocoweb™

CLASSIC HIGH POWER LED FLOOR LAMP INSTALLATION FLED18B



STEPS:

1. Plug the adapter into an outlet that is 110V (US Standard)
2. Adjust the joint of the arms and tighten it.
3. Do not allow kids to play with the lamp as if it was a toy.
4. Avoid placing flammable items within 6 inches of the lamp.
5. During an emergency, unplug the adapter from the outlet.

