

# DIRECT WIRE (DSL) SERIES PICTURE LIGHT

## INSTALLATION & MOUNTING INSTRUCTIONS

Rev, 5 (09/16)

Carefully read these instructions in their entirety before beginning installation. SAVE THESE INSTRUCTIONS FOR FUTURE REFERENCE.

### **IMPORTANT:**

ALL ELECTRICAL PRODUCTS MAY PRESENT A POSSIBLE SHOCK OR FIRE HAZARD IF IMPROPERLY INSTALLED OR USED. ALL ELECTRICAL WORK SHOULD BE INSTALLED IN ACCORDANCE WITH APPLICABLE CODES AND REGULATIONS. INSTALLATION SHOULD BE PERFORMED BY A QUALIFIED ELECTRICIAN.

### **WARNING**

Risk of electrical shock. Before starting installation, turn OFF electricity at the main fuse or circuit breaker that controls the power to the fixture/room you are working on before installing fixture.

### **STEP 1: UNPACKING THE LIGHT:**

1. Remove all plastic wrapping from the light fixture.
2. Swivel both picture light arms outward from the lamp shade. They should be aligned at a 90 degree angle from the lamp shade.

### **STEP 2: INSTALL THE RIGHT ARM (Fig. 2):**

1. Remove the retainer from the backplate by removing the two (2) mounting screws.
2. Route the wires from the junction box through the access hole in the retainer and secure the retainer to the junction box with the two (2) screws provided.
3. Connect the DSL fixture BROWN wire to the BLACK (LINE) junction box wire
4. Connect the DSL fixture BLUE wire to the WHITE (NEUTRAL) junction box wire.
5. Slide the back plate over the retainer carefully and install the two (2) mounting screws.

Fig. 1

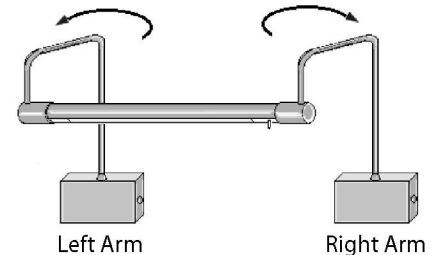
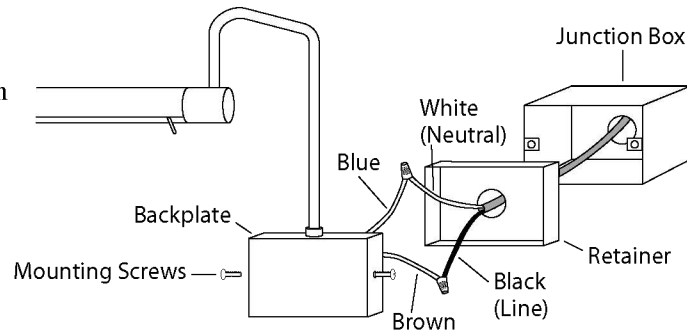


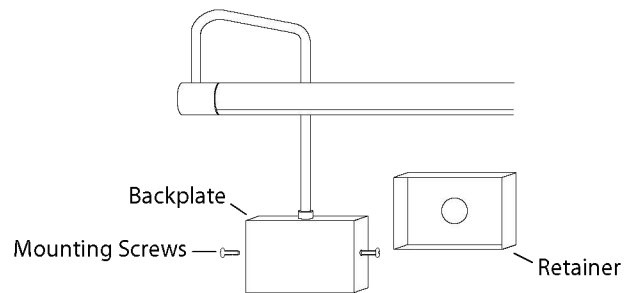
Fig. 2 RIGHT ARM



### **STEP 3: INSTALL THE LEFT ARM (Fig. 3):**

1. Mark the location for the left retainer level with the right retainer.
2. Remove the retainer from the back plate by removing the two (2) mounting screws.
3. Secure the retainer to the wall.
4. Slide the back plate over the retainer carefully and install the two (2) mounting screws.

Fig. 3 LEFT ARM



### **CARE INSTRUCTIONS:**

DO NOT use abrasives or chemical cleaners to clean the picture light as it may damage the finish. Use only warm water, then wipe dry with a clean cloth or soft towel.

**cocoweb™**  
www.cocoweb.com

3 Corporate Park, Suite 240  
Irvine, CA 92606  
Phone: 1-888-783-0378

### **LIMITED 2 YEAR WARRANTY**

Cocoweb.com, Inc. warrants its picture lights to be made of first class materials, free from defects of material or workmanship under normal use and to perform the service for which they are intended in a reliable and efficient manner when properly installed, for a period of two years from the date of purchase. During the warranty period, Cocoweb.com, Inc. will, at its choice, repair or replace any part or parts which prove to be defective if returned to Cocoweb.com, Inc.